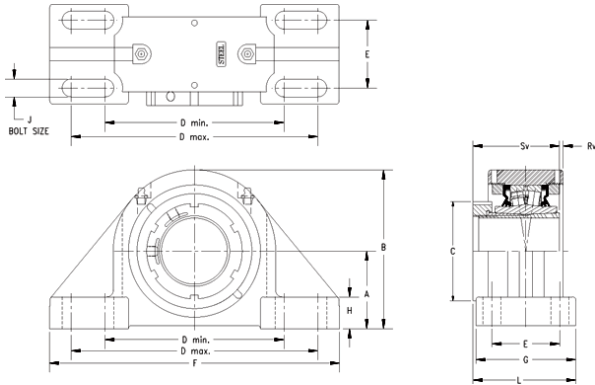




TON BEARING CO.,LTD.



timken QVPK15V065S Solid Block/Spherical Roller Bearing Housed Units-Single V-Lock Four-Bolt Pillow Block

Bearing No. QVPK15V065S

QVPK15V065S Bearing 2D drawings and 3D CAD models

Engineering Group	Mounted Bearing
Shaft Size	65 mm
Shaft Size Type	Metric
Full Timken Part Number	QVPK15V065SB
Locking Style	Single V-Lock
Weight	29 lb
Housing Style	Four-Bolt Pillow Block
UPC Code	0883450054201
Dimension A	3.50 in
Dimension B	6.83 in
Dimension C	3.7 in
Dimension D Max	10.44 in
Dimension D Min	9.06 in
Dimension E	2.75 in
Dimension F	13.000 in
Dimension G	4.2500 in
Dimension H	1.54 in
Dimension L	4.17 in
Dimension RV	0.11 in
Dimension SV	3.25 in
C0 - Static Load	54100 lb
C - Dynamic Load (Basic)	49900 lb
e - Geometry Factor	0.22
Y1 - Geometry Factor	3.14
Y2 - Geometry Factor	4.67



TON BEARING CO.,LTD.

Oil Lubrication - M/N Seal	1600 rpm
Oil Lubrication - T Seal	2900 rpm
Oil Lubrication - B/C/O Seal	1300 rpm
Grease Lubrication - M/N Seal	1600 rpm
Grease Lubrication - T Seal	2400 rpm
Grease Lubrication - B/C/O Seal	1300 rpm
Float	0.083 in
Shaft Tolerance	0.0015 in
Eng Internal Radial Clearance - Min	0.0030
Eng Internal Radial Clearance - Max	0.0037
Pre Install Clearance Min	0.0030 in
Pre Install Clearance Max	0.0037 in